

# Dogger Bank News

## Dogger Bank Creyke Beck enters examination phase

**Forewind's proposed Dogger Bank Creyke Beck 2.4 gigawatt (GW) offshore wind development has now entered its six-month examination phase with the Planning Inspectorate.**

The 25-volume application was submitted in August 2013 and accepted for examination the following month. Interested parties were then given a six-week period to register their representation with the Planning Inspectorate and ensure their involvement in the examination phase along with statutory consultees.

A total of 57 relevant representations were submitted for the development and these

individuals and organisations will now be included in the process to fully examine the development consent order application content and project details.

The next step will be the preliminary meeting in Hull (Tuesday, 18 February) to discuss the procedures that will be involved in the examination of the application. The outcomes from that meeting are due to be published on the National Infrastructure Planning Portal along with the timetable for the examination – [www.infrastructure.planningportal.gov.uk](http://www.infrastructure.planningportal.gov.uk).

The timetable will include deadlines for when detailed written representations are due and deadlines for comments on others'

relevant representations. It will also set out the dates for hearings to look at specific technical issues and details of an open floor hearing for members of the public.

Forewind's consent manager Melissa Read said that this is an inclusive and ongoing process designed to ensure everyone with comments on the proposals is able to have their say.

"I would encourage anyone with an interest in the development to regularly check the National Infrastructure Planning Portal as well as the Forewind website to ensure they are up to date with the progress of the examination phase," she said.

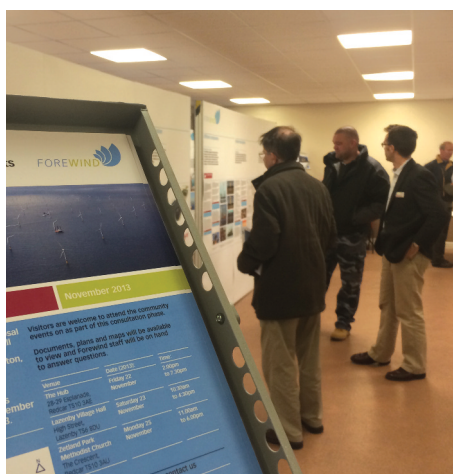
## Local people have their say

**Almost 100 people attended the public events held as part of Forewind's second and final phase of consultation for its 2.4 GW Dogger Bank Teesside A & B development in December and took the opportunity to give their impressions on the proposals.**

The events in Redcar & Cleveland at the HUB, Lazenby Village Hall and Zetland Park Methodist Church Hall gave the local community the opportunity to find out all about the development and discuss its details and impacts with Forewind team members.

A total of 39 questionnaires and five comment cards were completed, and the responses will now be incorporated where possible in the final Dogger Bank Teesside A & B development consent order application, to be submitted to the Planning Inspectorate this spring.

This six-week consultation phase was the culmination of almost four years of work



Almost 100 people attended the consultation events.

including onshore and offshore environmental and engineering surveys, consultation and technical assessments. As well as the events and direct mail to stakeholders, Forewind also consulted with an extended list of interest groups and government agencies, including Environment Agency, Highways Agency, local wildlife clubs, fisheries organisations and community groups. (See summary of feedback from the consultation phase on page 3.)

## Latest news on Dogger Bank

**This issue of Forewind's Dogger Bank News outlines the process of the examination phase for Dogger Bank Creyke Beck and summarises the results of the Dogger Bank Teesside A & B consultation held at the end of last year.**

If you would like to receive this newsletter electronically, please visit [www.forewind.co.uk](http://www.forewind.co.uk) to register your contact details.

Previous editions of this newsletter can also be found on the website while hard copies can be obtained on request.



## DOGGER BANK CREYKE BECK

Dogger Bank Creyke Beck is a 2.4 GW offshore wind development of two separate 1.2 GW wind farms, each with up to 200 turbines. It will comprise two new converter stations near to the grid connection at the National Grid's existing Creyke Beck substation.

## Planning Council votes in favour

**Late last year Forewind received wide media coverage as East Riding of Yorkshire Council announced its Planning Committee had unanimously voted in favour of the Dogger Bank Creyke Beck proposals.**

In a Planning Committee meeting to discuss the proposed project, every committee member agreed with the recommendation from the Director of Planning and Economic Regeneration's report, which was to raise no objection.

The report concluded that the proposal would significantly contribute to the increased provision of renewable energy. Also that the onshore visual impact of the

converter stations would be far outweighed by the benefits, and with mitigation would be acceptable.

Forewind fully involved the Council during the pre-application phase, holding regular meetings and establishing a community-working group with local representatives who helped define a mutually acceptable site for the onshore converter stations at an early stage.

## Dogger Bank Zone capacity revised

**Forewind, in agreement with The Crown Estate, has revised its target for the total capacity of installed wind energy projects in the Dogger Bank Zone from 9 gigawatts (GW) to 7.2 GW.**

The revision has been made following more than four years of offshore and onshore surveys and assessments, which have concluded that the focus should be on those projects which are most likely to achieve a positive financial investment decision at this time. Forewind had intended to develop up to eight 1.2 GW offshore wind energy projects however this announcement means the organisation will now proceed with six 1.2 GW projects.

The revised capacity better aligns plans for the Zone with the UK government's aspirations for offshore wind deployment given its current target of between 8 and 15 GW of energy projects by 2020.

General Manager Lee Clarke said that Forewind still has 7.2 GW of capacity planned which is a huge undertaking. "Even just the first four projects represent more potential capacity than all the wind farms now operating in UK waters."



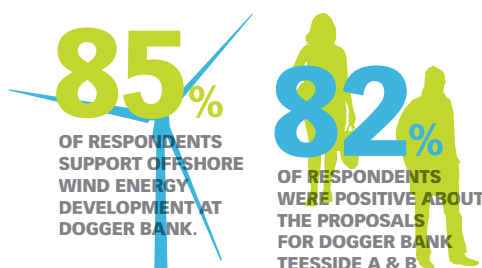
## DOGGER BANK TEESSIDE A & B

## High levels of support

**The completed questionnaires received by Forewind as part of the recent consultation on Dogger Bank Teesside A & B showed overwhelming support for the development.**

Structured to enable useful statistics and comments to be taken from the responses, the questionnaires also showed a high level of support for offshore wind energy in general.

85% of those people who filled in the Dogger Bank Teesside A & B consultation questionnaire said they support the proposals for offshore wind energy development at Dogger Bank, with 10% undecided and just 5% not in favour.



On the question "do you believe that offshore wind energy is integral to the UK's future energy requirements", 79% agreed, 15% were undecided and only 6% disagreed.

A number of questions about the specific proposals for the development's offshore

components, including the type of foundations and wind turbines; the project boundaries, environmental factors and the onshore aspects such as proposed landscaping brought useful comments, which will be considered when finalising the development consent order application.

There was no single major issue brought up through the questionnaires though a number of respondents (29%) did mention the landfall, with issues such as coastal erosion, sand martins and housing, as a concern. Forewind has done in-depth studies on the landfall location and all the impacts around it as part of its environmental assessments and minimising these will be a key consideration during construction.

Some of the other concerns raised included the size of the projects, number of turbines and impact on marine mammals, all of which will be addressed in the final application. 82% of respondents said their overall impressions of the Dogger Bank Teesside A & B offshore wind proposal were positive, while 86% supported the construction and operation of the project.

Dogger Bank Teesside A & B Project Manager Chris Nunn said the Forewind team was very grateful to everyone who took the time to complete and return the questionnaires and give their feedback.

"The responses will be invaluable in helping us to ensure we have fully addressed all the issues important to the local communities in our final development consent order application."



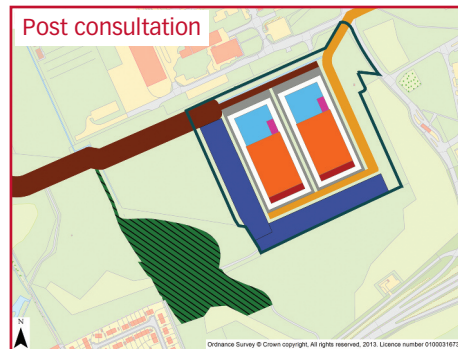
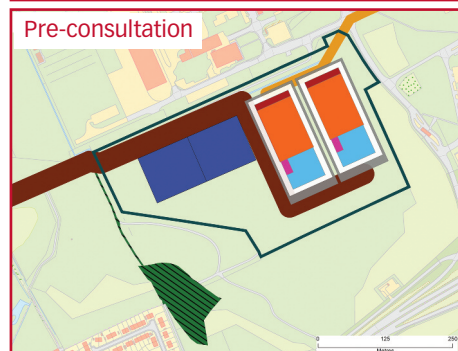
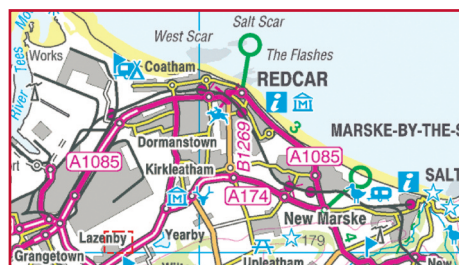
## DOGGER BANK TEESSIDE A & B

Dogger Bank Teesside A & B is a 2.4 GW development comprising two offshore wind farms, each up to 1.2 GW. Both wind farms will connect via underground cables into the national grid at the existing substation at Lackenby, in Redcar & Cleveland. The development proposals include new converter stations in the south-western corner of the Wilton complex.

# Feedback leads to changes

**A number of changes have been made to the proposals for Dogger Bank Teesside A & B in response to feedback received as part of the final stage of pre-application consultation at the end of last year.**

While all the comments received from questionnaires and direct responses to the consultation will be considered and incorporated where possible, several changes have already been made as a result of the input.



**Converter stations site**  
 Dogger Bank Teesside A & B  
**Cable type**  
 High voltage direct current cable route (HVDC)  
 High voltage alternating current cable route (HVAC)  
 Construction compounds  
 Landscape mitigation works  
**Converter stations infrastructure**  
 High voltage direct current converter hall  
 High voltage direct current yard  
 High voltage alternating current yard  
 Office/control building  
 Inner boundary  
 Road

Map showing changes to the indicative converter stations site and layout.

## Landfall working area

The main offshore change to date has been the reduction in the size of the temporary working area just off the coast at the site of the landfall between Redcar and Marske-by-the-Sea. This reduction will avoid certain geological features, which were brought to our attention by the Tees Valley RIGS Group, a local volunteer geoconservation organisation.

These geological features include the Redcar mudstone formation of the Red Howles site, between Red Howles and Redcar Rocks.

## Converter stations

Onshore, concerns were raised about the size of the land area proposed for the two converter stations at the Wilton Complex. After some assessment Forewind has been able to reduce this area by 3.8 hectares (9.4 acres). Its total footprint is now 9.3 hectares (23 acres).

Since the consultation and following a new topographical survey, there has been a review of the size of the land area needed for the landscaping proposed to screen the converter stations. To properly accommodate this mitigation and ensure it is most effective, Forewind has needed to increase the amount of land required.

The orientation of the converter stations has also been changed by 180 degrees since the consultation. The transformers, which have the most potential for noise, have been moved north of the converter hall and further away from residential areas.

## Construction access

Two alternative routes were proposed for access to the cable route section near the existing Lackenby substation during construction. Route 1 is to the west of the substation, the route already used by National Grid to access the site and including the B1380, and Route 2 to the east, using the A1053 underpass and existing tracks within the Wilton Complex.

It has been concluded that both routes will

be needed due to the level of anticipated construction traffic. Most of the traffic will be routed via the A1053 underpass and through the Wilton Complex (Route 2) with only those larger vehicles needing to travel on Route 1.

## Individual land parcels

Some other relatively minor design amendments have been made to aspects of the proposed onshore works within individual fields along the cable route. As they impact only those with a specific interest in that area of land, Forewind will consult directly with the relevant landowners and with those people who have a specific interest in that particular field.

## Wintering birds

Acting on feedback given by Natural England on the data provided about wintering birds at the landfall area, particularly the Golden Plover, Forewind has undertaken work to further substantiate the results. The preliminary environmental information provided during the consultation showed that bird numbers drop in January and February.

To gather additional supporting evidence for this, Forewind will carry out a new desktop study plus field surveys this winter. Depending on the relevance of the data gathered, consolidated results comprising the previous data and any new information will be fed back to Natural England as part of our ongoing consultation.



Forewind has undertaken further surveys on wintering birds such as the Golden Plover.

**Over the coming months Forewind will incorporate these changes, and will conclude all the other parcels of work required to finalise the development consent order application, in readiness for its submission to the Planning Inspectorate in the spring.**



## Computer generated Dogger Bank

**A 3D computer generated simulation of the proposed Dogger Bank offshore development will be produced to help offshore authorities understand what vessels and rescue helicopters will see once it is constructed.**

Being developed following consultation with the Maritime and Coastguard Agency and Trinity House Lighthouse Service, the simulation will enable users to view what the wind farms would look like at sea height from the bridge of a vessel or at flight height from a helicopter cockpit.

The simulation will offer different scenarios in terms of wind turbine size and layout, type of foundation used and infrastructure including accommodation platforms, collector and converter stations, and meteorological masts.

Simulator users will also be able to control whether it is night or day and what sea and

weather conditions they may encounter, such as fog, haze and rough waves.

### Realistic model

Forewind's Offshore Environmental Impact Assessment Manager, Martin Goff said to make the model realistic, users will be able to drop in selected objects where they want such as tankers, cargo ships, construction or fishing vessels, search and rescue boats, life rafts or marker buoys.

"It is being designed to show how multiple wind farms within the Dogger Bank Zone would appear to an observer, to give perspective on the spaces between the different wind farms and how the boundaries would look on this scale," he said.

"As well as enabling a better understanding of commercial shipping and search and rescue operations in the in the wind farms, this will



One layout option of the Dogger Bank development in 3D.

be a user-friendly and valuable tool to reassure other sea users, in particular fishermen, about their ability to navigate Dogger Bank once the wind farms have been constructed."

The interactive simulation is being produced by UK company, 3D Web Tech, specialists in innovative 3D computer generated graphics solutions.

## Third cohort of Champions underway

**The third cohort of teachers appointed as "wind energy champions" has started work on developing resources to educate students about the career opportunities available in the offshore wind industry.**

This takes the number of teachers involved in the Champions for Wind programme to 39 and the total number of schools from Hull, East Riding of Yorkshire and Teesside to 28.

The latest group of champions has come from the following schools: Cottingham High School; Oases North East; Malet Lambert; Snaith School; Eskdale School; Boulevard Academy; Caedmon School; Hessle School; Castleton, Glaisdale and St Hedda's Primary Schools; and Redcar Academy and Laurence Jackson School.

They will be delivering their programmes to students over the coming months before presenting them for peer review at a conference at the National Science Technology Engineering and Mathematics (STEM) Centre in York in June.



### Champions for Wind Participating schools

1. Oases North East
2. Dykehouse School
3. Hartlepool Pupil Referral Unit
4. Redcar and Cleveland College
5. Zetland Primary
6. St Peters School
7. Kirkleatham Hall School
8. Ryehills School
9. Bydales School
10. Castleton Primary
11. Glaisdale Primary
12. St Hedda's Primary
13. Caedmon School
14. Eskdale School
15. Scalby School
16. Graham School
17. Headlands School
18. Driffild School
19. Ashwell Academy
20. Cottingham High School
21. Malet Lambert
22. Kelvin Hall School
23. Boulevard Academy
24. Hessle Federation
25. Act the Facts (educational script writers)
26. The Snaith School
27. Witherssea High
28. Laurence Jackson School

▲ Substation  
 — Onshore Export Cable Route  
 — Offshore Export Cable Route

Cohort  
 ● 1  
 ● 2  
 ● 3